

BUILDING LANDSCAPING REQUIREMENTS:

REQUIRED FOUNDATION LANDSCAPING SHALL BE 12% OF THE FRONT FAÇADE SQUARE FOOTAGE WHERE BUILDING FRONTS PARKING OR STREET SIDES

Requirement: sf x 12% = provided	FAÇADE SF	12% REQ	PROVIDED SF	FAÇADE SF	12% REQ	PROVIDED SF	FAÇADE SF	12% REQ	PROVIDED SF	FAÇADE SF	12% REQ	PROVIDED SF
BLDG 1,2,5	4255	510	629				1751*	210	454			
BLDG 3	8141	737	854									
BLDG 4, 5, 7	5476	656	1190									
BLDG 8	4077	490	880				1123*	135	278	1123	210	454
BLDG 9	3638	437	880									
CLUBHOUSE	588	69	245	568	68	259	420	50	275	420	50	144

*EACH BUILDING

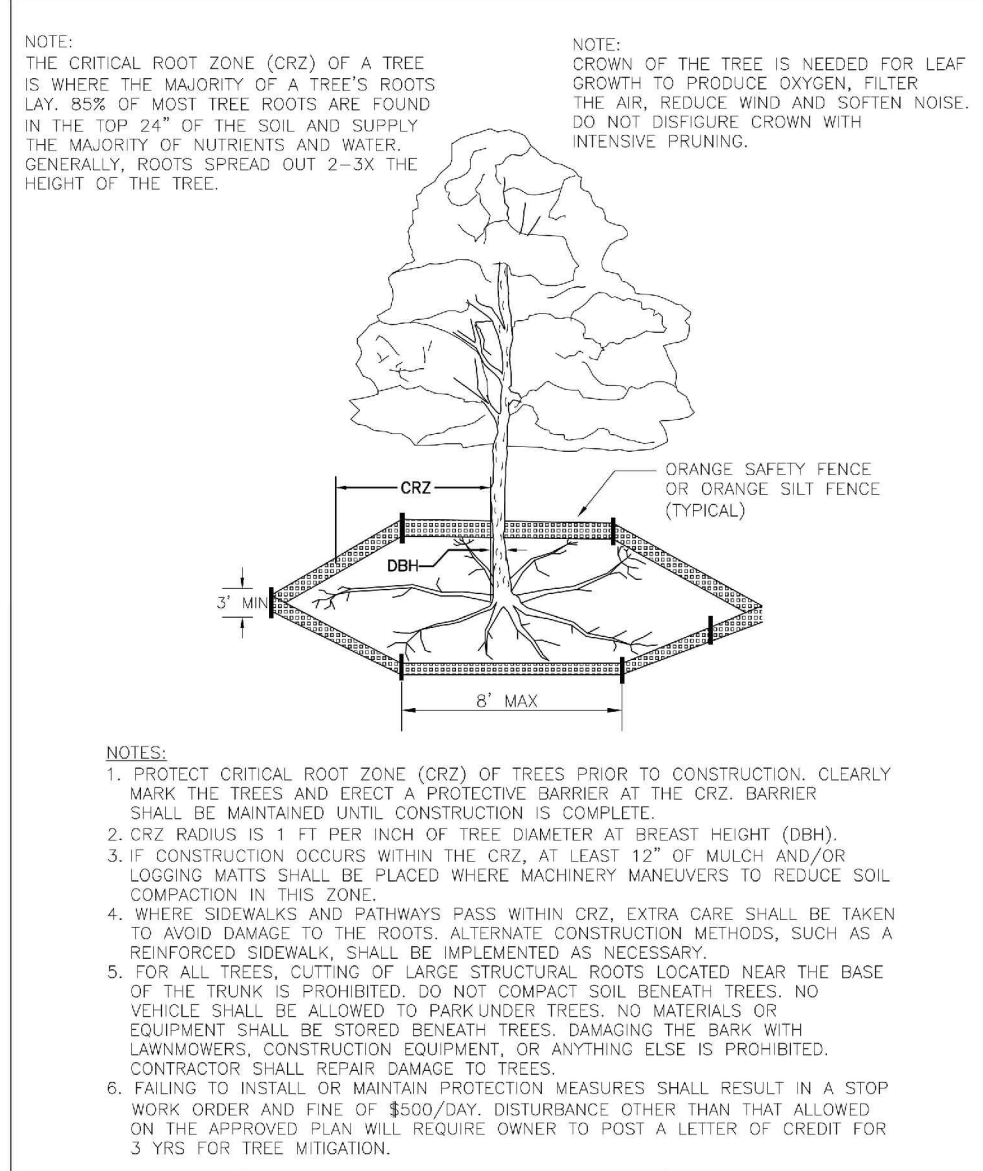
STREET YARD REQUIREMENTS

REQUIRED FOR EVERY 600 SF	TOTAL	REQUIRED	PROVIDED
1 TREE 2" CAL SHRUB 12" AT PLANTING	675 LF - 72 LF (DRIVES) = 603 LF	12	
6 SHRUBS 3 x 5' AT MATURITY	603 X 18 = 7236 SQFT/600 x 6 =	72	72

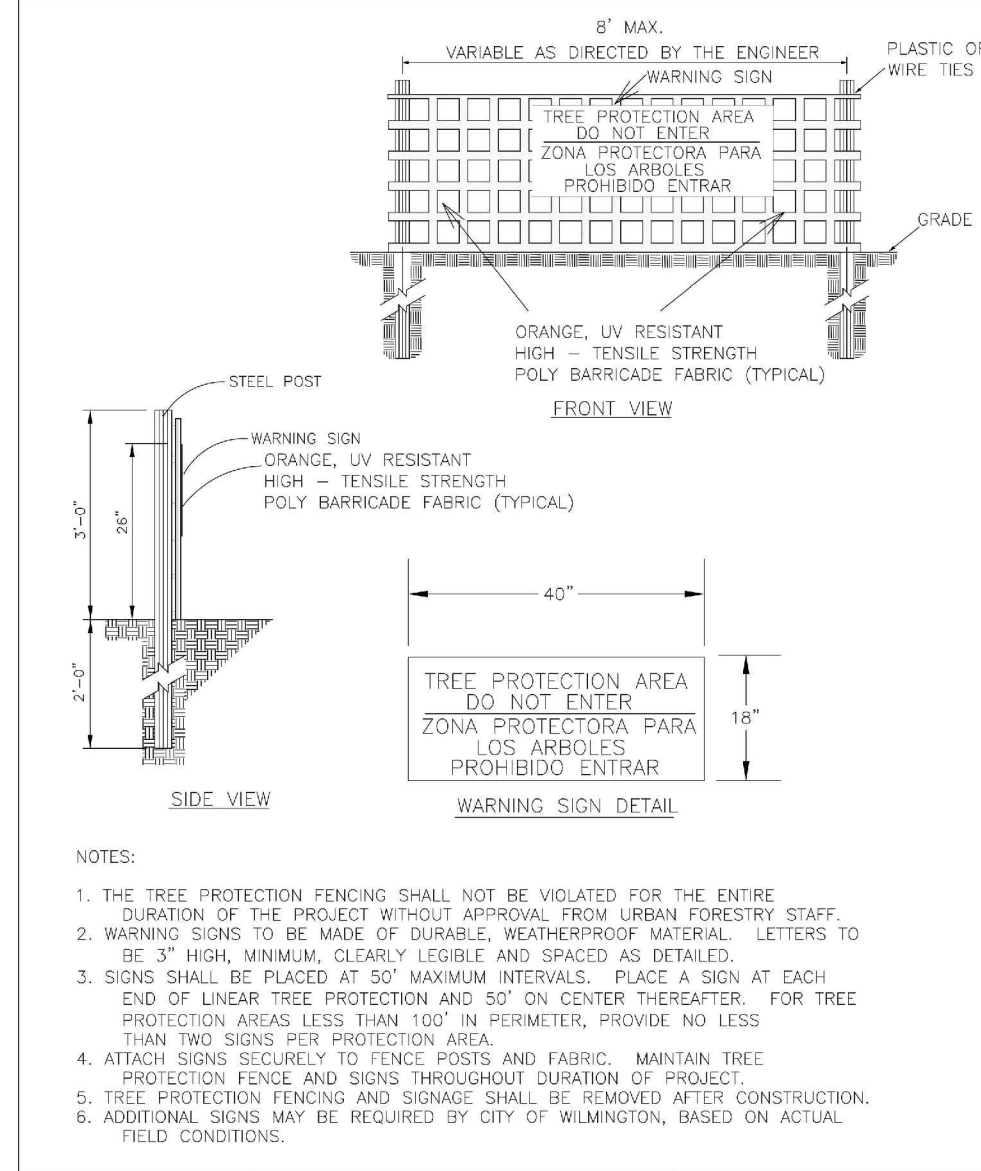
LIMITS OF DISTURBANCE TREE REQUIREMENT: 12.19 AC x 15 TREES = 183 TREES REQ.
PROVIDED: 211 SHADE TREES AND 59 SMALL TREES
TREES REMOVAL ALLOWANCE 25% FOR BUILDING FOOTPRINTS: UNITS TOTAL FOOT PRINT (93445 SQ FT) / 14.76 AC (643816 SQFT) = 14.6%
TREES REMAINING: 116

LANDSCAPE NOTES:

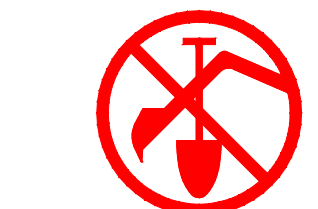
- NO PLANTINGS OVER 30" IN HEIGHT ALLOWED IN VISION CLEARANCE.
- PROTECTION FROM VEHICULAR TRAFFIC PROVIDE AROUND ALL LANDSCAPING WITH A MINIMUM HEIGHT OF 6".
- OWNER RESPONSIBLE FOR MAINTENANCE TO ENSURE PLANT MATERIAL LIVES AND PROSPERS.
- PLANTING PLANS SHALL BE APPROVED BY LANDSCAPE DESIGNER PRIOR TO INSTALLATION.
- A LOW BUFFER SHALL BE REQUIRED WHERE PARKING IS WITHIN FIFTY (50) FEET OF ROW
- A MINIMUM OF 15 TREES 2 INCHES OR GREATER IN DIAMETER AS MEASURED 6 INCHES ABOVE GROUND PER DISTURBED ACRE. 12.19 AC DISTURBED X 15 TREES = 183 TREES REQUIRED.
- TREES PRESERVED:
CALIPER 8"+/NUMBER: 116
- TREES REMOVED:
CALIPER ALL/NUMBER: 958
- SPECIES MIX FOR TREES PRESERVED & TREES REMOVED: MAGNOLIA, POPLAR, OAK, MAPLE, PINE
- STREET TREES SHALL BE INSTALLED ALONG RESIDENTIAL STREETS AFTER ALL DRIVEWAYS HAVE BEEN INSTALLED.
- THE DEVELOPER SHALL NOTIFY LANDSCAPE DESIGNER PRIOR TO INSTALLATION TO ENSURE PROPER TREE SELECTION AND SPACING.
- EACH TREE SHALL BE A MINIMUM OF 2" CALIPER.
- PHASING OF A PROJECT SHALL BE PERMITTED, HOWEVER, STREET TREES ON THE SAME BLOCK SHALL BE PLANTED AT THE SAME TIME TO AVOID SIZE IRREGULARITIES.
- TREES WITHIN THE SAME BLOCK SHALL BE THE SAME SPECIES.
- POND PLANTINGS:LANDSCAPESTRIP SHALL BE A MAXIMUM SLOPE OF 7:1. PONDS ARE UNDER .5 AC SO A 5' MAINTENANCE STRIP IS REQUIRED. VEGETATION MUST BE EVENLY DISTRIBUTED AT APPROXIMATELY 100' INTERVALS AROUND POND. PROVIDE A MINIMUM OF 3" OF MULCH AROUND ALL VEGETAION.
- LAWN TYPE IS BERMUDA GRASS- SPECIFICATION SECTION: SECTION 02920 - LAWNS AND GRASSES
- PLANTING SPECIFICATION: SECTION 02930 - EXTERIOR PLANTS
- IN AREAS OF DISTURBANCE, TOPSOIL LAYER WILL BE SAVED AND STOCKPILED WITH NO GREATER THAN 1:4 ANGLE OF REPOSE IN APPROVED AREA BEFORE GRADING OR CONSTRUCTION. TREES TO REMAIN ROOT ZONES WILL BE EXCLUDED. EROSION CONTROL FENCING WILL ENCOMPASS THE PILE. TOPSOIL WILL BE SPREAD 2" THICK AS PART OF THE LAWN AREAS.
- MULCH LANDSCAPE PLANTINGS WITH 3" DEPTH OF SHREDDED HARDWOOD MULCH.



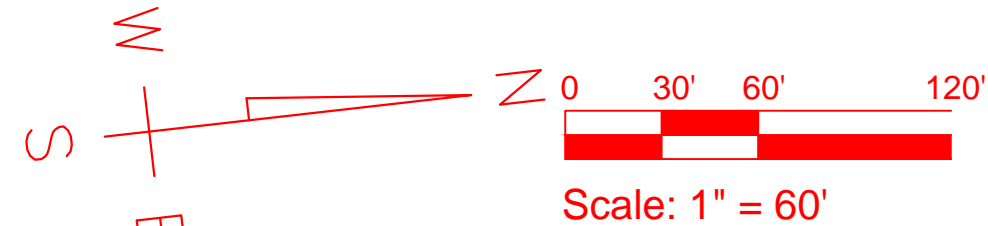
1 TREE PROTECTION DURING CONSTRUCTION



2 TREE PROTECTION DURING CONSTRUCTION



BEFORE YOU DIG!
CALL 1-800-632-4949
N.C. ONE-CALL CENTER
IT'S THE LAW!



Cypress Cove Apartments
821 Emory St
Wilmington, NC 28405

200 UNITS

TightLines Designs
creating great places to live

115.5 E. Hargett St, Suite 300, Raleigh, NC 27601
919-834-3600 • www.tightlinesdesigns.com

Cypress Cove
LANDSCAPE PLAN,
NOTES, & DETAILS



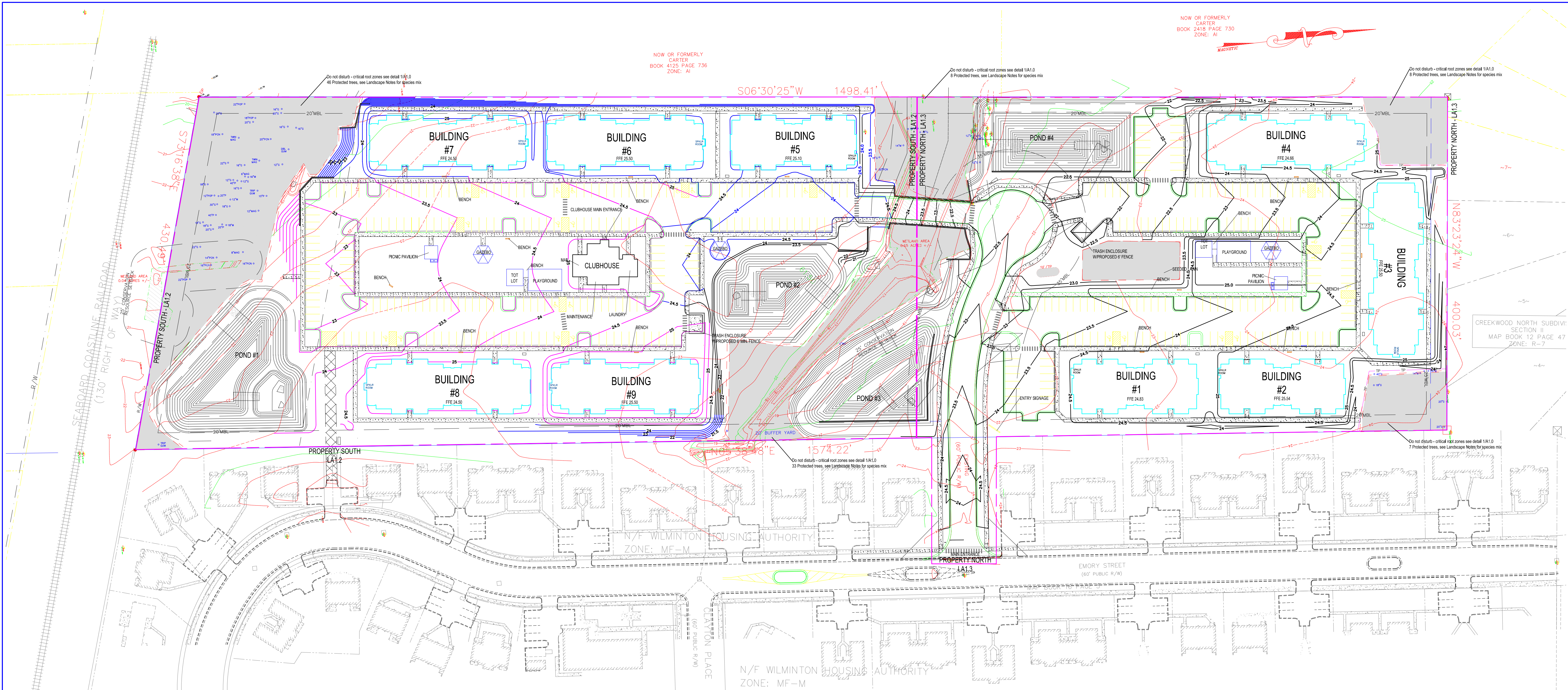
HBC - H. BURKERT & CO.
668 Midway Road SE, Bolivia, NC 28422
T: 910.253.95 F: 910.253.9386
Electronic Mail: hbc@hburkert.com
www.hburkert.com

Heather M. Burkert
Landscape Architect

date 04.14.17
drafter CMK
checked by HMB
proj. no. T-160014
revisions date
REV 09.20.17

STREET TREE & PARKING
SITE LAYOUT

LA1.0

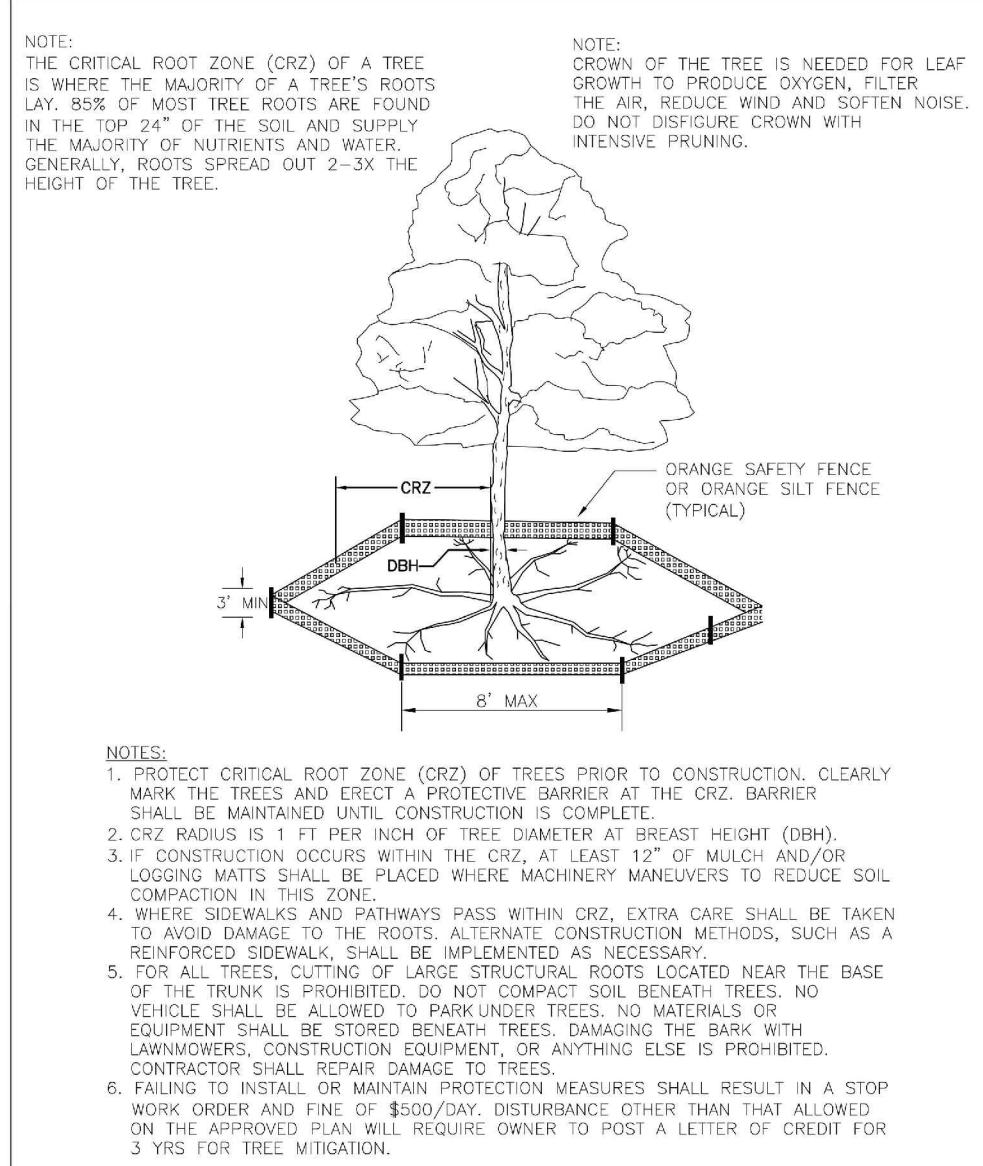


BUILDING LANDSCAPING REQUIREMENTS:

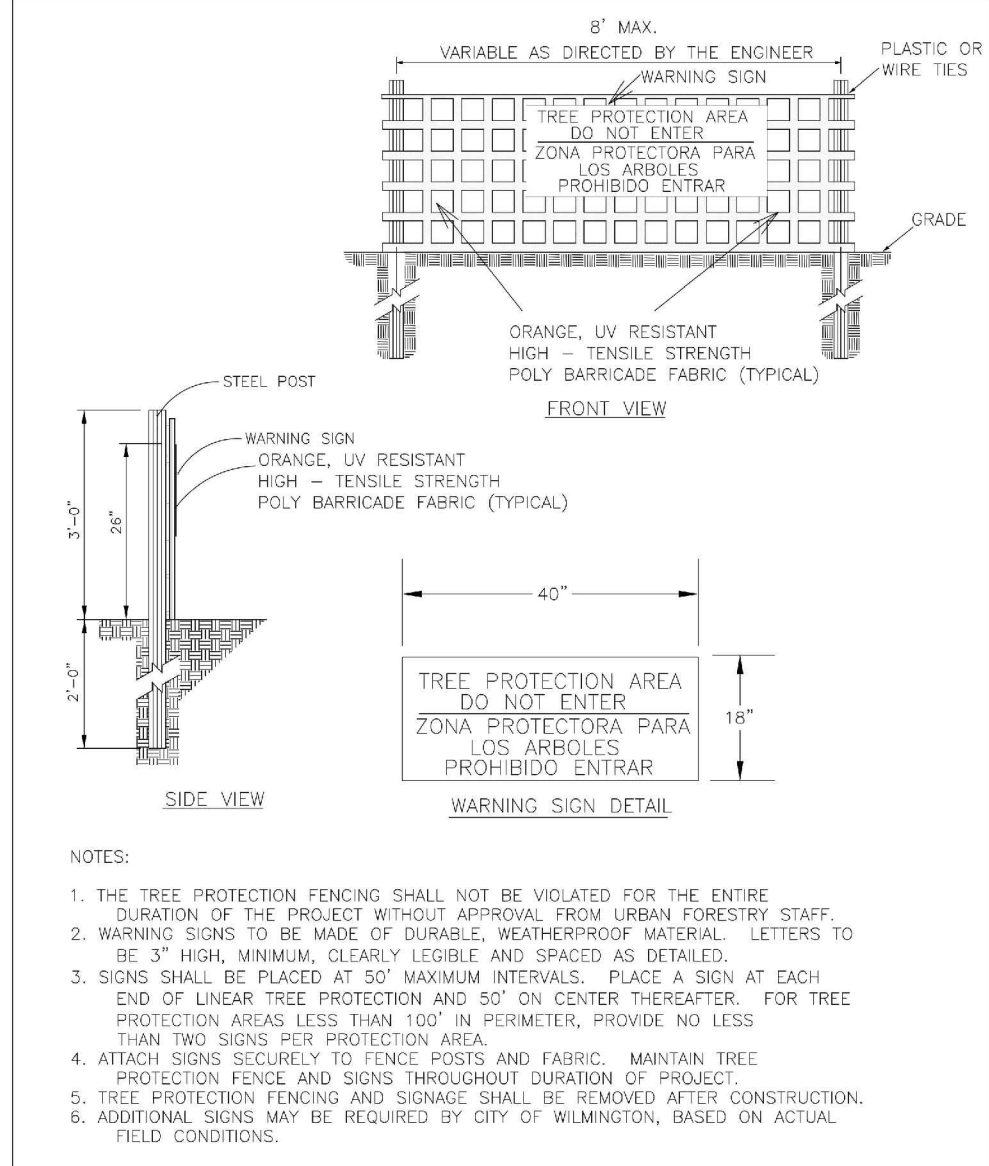
REQUIRED FOUNDATION LANDSCAPING SHALL BE 12% OF THE FRONT FAÇADE SQUARE FOOTAGE WHERE BUILDING FRONTS PARKING OR STREET SIDES

Requirement: sf x 12% = provided	FRONT		REAR		RIGHT		LEFT	
	FAÇADE SF	12% REQ PROVIDED SF	FAÇADE SF	12% REQ PROVIDED SF	FAÇADE SF	12% REQ PROVIDED SF	FAÇADE SF	12% REQ PROVIDED SF
BLDG 1,2,5	4255	510	629		1751*	210	454	
BLDG 3	6141	737	854					
BLDG 4, 6, 7	5478	658	1190		1123*	135	1123	210
BLDG 8	4077	490	880					454
BLDG 9	3636	437	880					
CLUBHOUSE	568	69	245	568	68	259	420	50

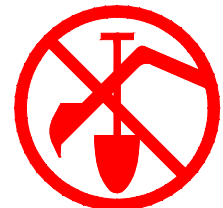
*EACH BUILDING



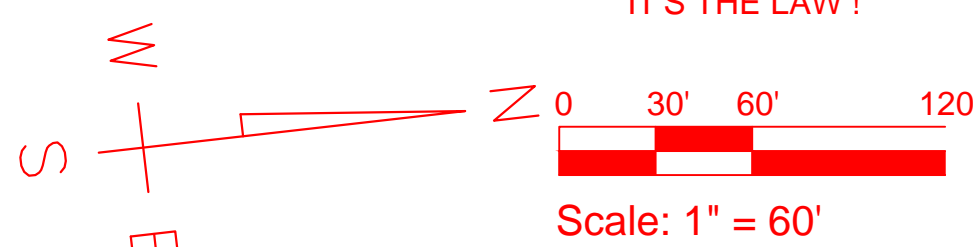
1 TREE PROTECTION DURING CONSTRUCTION



2 TREE PROTECTION DURING CONSTRUCTION



BEFORE YOU DIG !
CALL 1-800-632-4949
N.C. ONE-CALL CENTER
IT'S THE LAW !



Cypress Cove Apartments
821 Emory St
Wilmington, NC 28405

200 UNITS

TightLines Designs
creating great places to live
115.5 E. Hargett St, Suite 300, Raleigh, NC 27601
919-834-3600 • www.tightlinesdesigns.com

Cypress Cove
LANDSCAPE PLAN,
NOTES, & DETAILS

H B C
H. BURKERT & Co.
PLANNING • CIVIL ENGINEERING • LANDSCAPE ARCHITECTURE

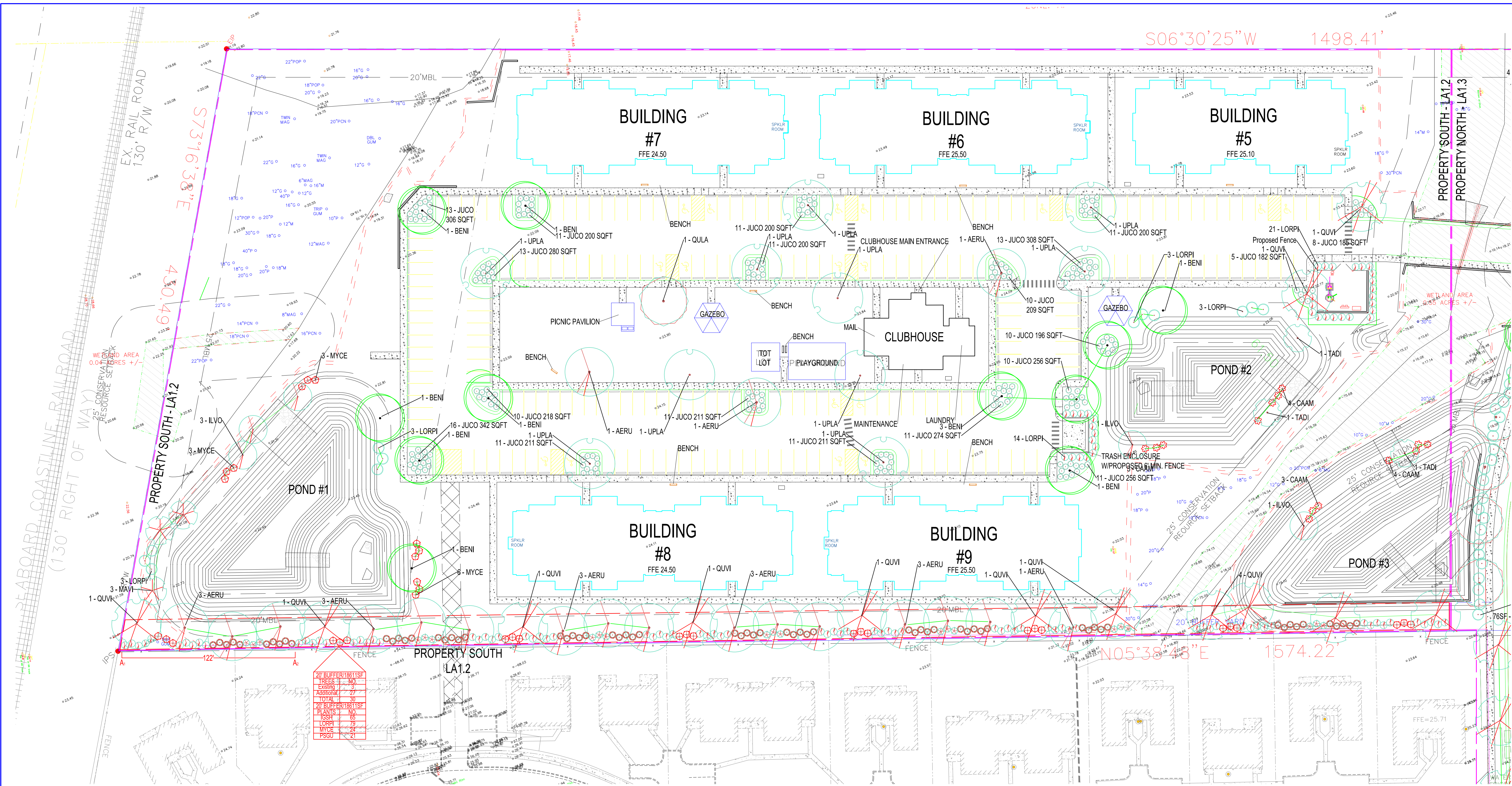
HBC - H. BURKERT & CO.
668 Midway Road SE, Bolivia, NC 28422
T: 910.253.95 F: 910.253.9386
Electronic Mail: hbc@hburkert.com
www.hburkert.com

Heather M. Burkert
Landscape Architect

date	04.14.17
drafter	CMK
checked by	HMB
proj. no.	T-160014
revisions	date
REV	09.20.17

STREET TREE & PARKING
OVERALL (KEY PLAN)
SITE SURVEY/SITE PLAN

LA1.1



PLANT LIST: Parking Lot (LA1.2)

	Quantity	Code	Botanical	Common	O.C.	Notes	Size	Cal.
SHADE TREE	3	AERU	Acer rubrum	Red Maple	40'		25 Gal 8-10"	2-2 1/2"
	8	BENI	Betula nigra	Dura Heat® River Birch	50'	multi-stem	25 Gal 8-10"	2-2 1/2"
	1	QUILA	Quercus latifolia	Laurel oak	30'		25 Gal 8-10"	2-2 1/2"
	2	QUVI	Quercus virginiana	Live oak	60'		25 Gal 8-10"	2-2 1/2"
	9	ULPA	Ulmus parvifolia	Lace bark elm	40'		25 Gal 8-10"	2-2 1/2"
SHRUB	188	JUCO	Juniperus conferta 'Shore'	Shore Juniper	4'		1 gal 12-18"	
	35	LORPI	Loropetalum ch. 'Pizzaz'	Pizzaz loropetalum	6'		1 gal 12-18"	

PLANT SCHEDULE: Pond #1 (LA1.2)

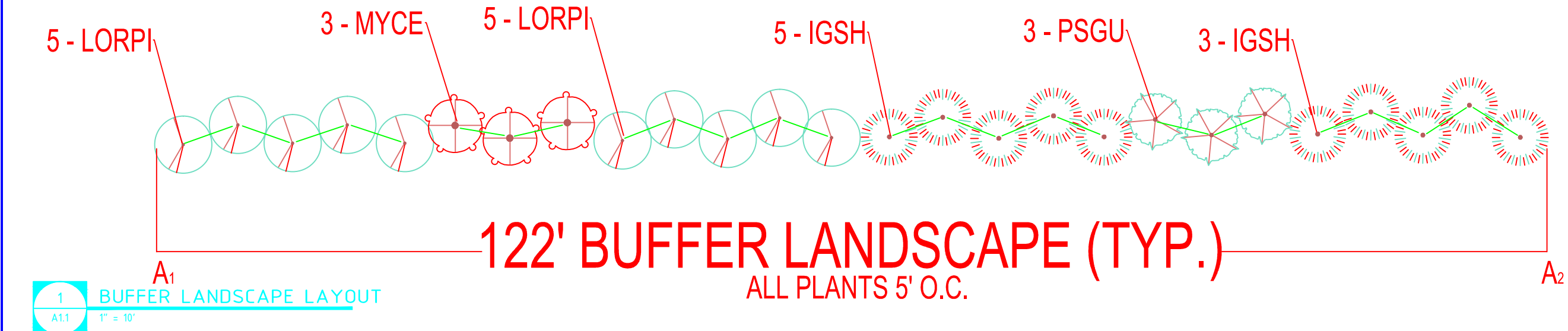
	Quantity	Code	Botanical	Common	O.C.	Notes	Size	Cal.
SHADE TREE	2	BENI	Betula nigra	Dura Heat® River Birch	50'	multi-stem	25 Gal 8-10"	2-2 1/2"
	3	MAVI	Magnolia virginiana	Sweetbay Magnolia	20'	multi-stem	25 Gal 8-10"	2-2 1/2"
	6	LORPI	Loropetalum ch. 'Pizzaz'	Pizzaz loropetalum	6'		1 gal 12-18"	
SHRUB	12	MYCE	Myrica cerifera	Wax myrtle	5'		1 gal 12-18"	
	3	ILVO	Ilex vomitoria	Yaupon Holly	15'		1 gal 12-18"	

PLANT SCHEDULE: Pond #2 (LA1.2)

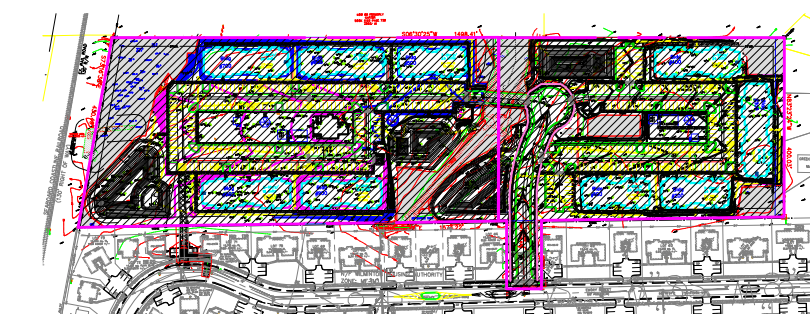
	Quantity	Code	Botanical	Common	O.C.	Notes	Size	Cal.
SHADE TREE	1	TADI	Taxodium distichum	Bald Cypress	25'		25 Gal 8-10"	2-2 1/2"
	7	CAAM	Callicarpa americana	Beautyberry	5'		1 gal 12-18"	
SHRUB	1	ILVO	Ilex vomitoria	Yaupon Holly	15'		1 gal 12-18"	

PLANT LIST: Buffer (LA1.2)

	Quantity	Code	Botanical	Common	O.C.	Notes	Size	Cal.
SHADE TREE	16	AERU	Acer rubrum	Red Maple	40'		25 Gal 8-10"	2-2 1/2"
	11	QUVI	Quercus virginiana	Live oak	60'		25 Gal 8-10"	2-2 1/2"
SHRUB	21	PSGU	Feijoa sellowiana	Pineapple guava	5'		5 Gal 3' min	
	65	IGSH	Ilex glabra 'Shamrock'	Shamrock Holly	5'		5 gal 3' min	
	79	LORPI	Loropetalum ch. 'Pizzaz'	Pizzaz loropetalum	6'		5 gal 3' min.	
	24	MYCE	Myrica cerifera	Wax myrtle	5'		5 gal 3' min.	



LA1.2: SOUTH



Cypress Cove Apartments
821 Emory St
Wilmington, NC 28405
200 UNITS

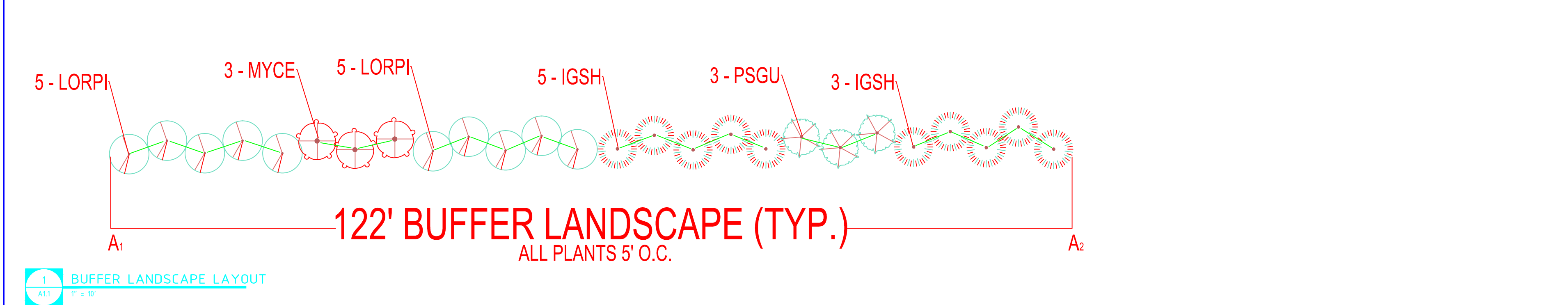
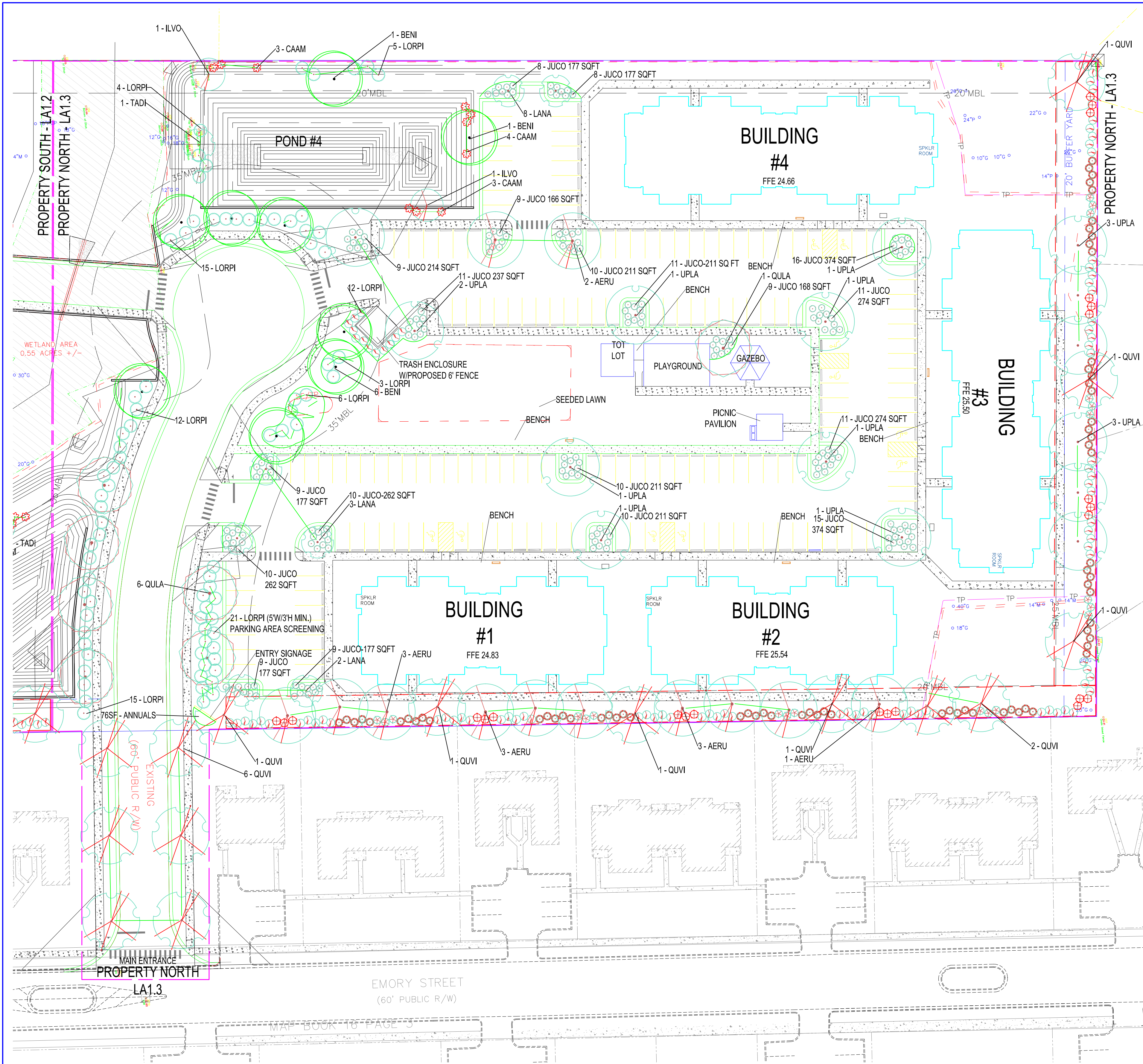
TightLines Designs
creating great places to live
115.5 E. Hargett St, Suite 300, Raleigh, NC 27601
919-834-3600 • www.tightlinesdesigns.com

Cypress Cove
LANDSCAPE PLAN,
NOTES, & DETAILS

H B C
H. BURKERT & CO.
PLANNING • CIVIL ENGINEERING • LANDSCAPE ARCHITECTURE
HBC - H. BURKERT & CO.
668 Midway Road SE, Bolivia, NC 28422
T: 910.253.95 F: 910.253.9386
Electronic Mail: hbc@hburkert.com
www.hburkert.com

date 04.14.17
drafter CMK
checked by HMB
proj. no. T-160014
revisions date
REV 09.20.17

STREET TREE & PARKING SOUTH
LA1.2



PLANT LIST: EAST Buffer (LA1.3)

	Quantity	Code	Botanical	Common	O.C.	Notes	Size	Cal.
SHADE TREE	10	AERU	Acer rubrum	Red Maple	40'		25 Gal 8-10'	2-2 1/2"
	6	QUVI	Quercus virginiana	Live oak	60'		25 Gal 8-10'	2-2 1/2"
	3	ULPA	Ulmus parvifolia	Lace bark elm	40'		25 Gal 8-10'	2-2 1/2"
SHRUB	Quantity	Code	Botanical	Common	O.C.	Notes	Size	Cal.
	12	PSGU	Feijoa sellowiana	Pineapple guava	5'		5 Gal 3' min	
	40	IGSH	Ilex glabra 'Shamrock'	Shamrock Holly	5'		5 gal 3' min	
	47	LORPI	Loropetalum ch. 'Pizzaz'	Pizzaz loropetalum	6'		5 gal 3' min.	
	15	MYCE	Myrica cerifera	Wax myrtle	5'		5 gal 3' min.	

PLANT LIST: NORTH Buffer (LA1.3)

	Quantity	Code	Botanical	Common	O.C.	Notes	Size	Cal.
SHADE TREE	3	QUVI	Quercus virginiana	Live oak	60'		25 Gal 8-10'	2-2 1/2"
	6	ULPA	Ulmus parvifolia	Lace bark elm	40'		25 Gal 8-10'	2-2 1/2"
SHRUB	Quantity	Code	Botanical	Common	O.C.	Notes	Size	Cal.
	12	PSGU	Feijoa sellowiana	Pineapple guava	5'		5 Gal 3' min	
	30	IGSH	Ilex glabra 'Shamrock'	Shamrock Holly	5'		5 gal 3' min.	
	34	LORPI	Loropetalum ch. 'Pizzaz'	Pizzaz loropetalum	6'		5 gal 3' min.	
	12	MYCE	Myrica cerifera	Wax myrtle	5'		5 gal 3' min.	

PLANT SCHEDULE: Pond #4 (LA1.3)

	Quantity	Code	Botanical	Common	O.C.	Notes	Size	Cal.
TREE	2	BENI	Betula nigra	Dura Heat® River Birch	50'	multi-stem	25 Gal 8-10'	2-2 1/2"
	1	TADI	Taxodium distichum	Bald Cypress	25'		25 Gal 8-10'	2-2 1/2"
SHRUB	Quantity	Code	Botanical	Common	O.C.	Notes	Size	Cal.
	10	CAAM	Callicarpa americana	Beautyberry	5'		1 gal 12-18"	
	2	ILVO	Ilex vomitoria	Yaupon Holly	15'		1 gal 12-18"	
	9	LORPI	Loropetalum ch. 'Pizzaz'	Pizzaz loropetalum	6'		5 gal 3' min.	

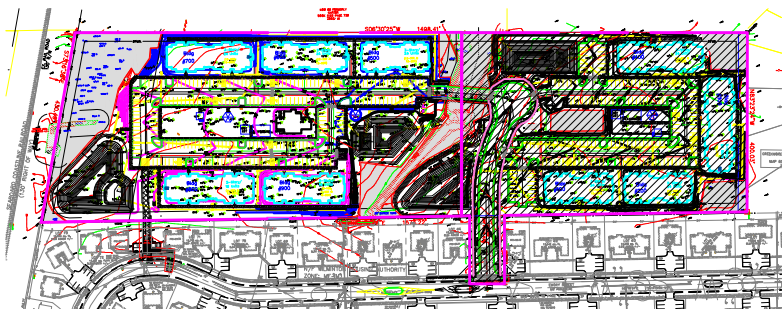
PLANT LIST: Parking Lot (LA1.2)

	Quantity	Code	Botanical	Common	O.C.	Notes	Size	Cal.
SHADE TREE	3	AERU	Acer rubrum	Red Maple	40'		25 Gal 8-10'	2-2 1/2"
	8	BENI	Betula nigra	Dura Heat® River Birch	50'	multi-stem	25 Gal 8-10'	2-2 1/2"
	1	QULA	Quercus latifolia	Laurel oak	30'		25 Gal 8-10'	2-2 1/2"
	2	QUVI	Quercus virginiana	Live oak	60'		25 Gal 8-10'	2-2 1/2"
	10	ULPA	Ulmus parvifolia	Lace bark elm	40'		25 Gal 8-10'	2-2 1/2"
SHRUB	Quantity	Code	Botanical	Common	O.C.	Notes	Size	Cal.
	199	JUCO	Juniperus conferta 'Shore'	Shore Juniper	4'		1 gal 12-18"	
	35	LORPI	Loropetalum ch. 'Pizzaz'	Pizzaz loropetalum	6'		1 gal 12-18"	

PLANT LIST: Street Yard (LA1.3)

	Quantity	Code	Botanical	Common	O.C.	Notes	Size	Cal.
SHADE TREE	6	BENI	Betula nigra	Dura Heat® River Birch	50'	multi-stem	25 Gal 8-10'	2-2 1/2"
	6	QULA	Quercus latifolia	Laurel oak	30'		25 Gal 8-10'	2-2 1/2"
	6	QUVI	Quercus virginiana	Live oak	60'		25 Gal 8-10'	2-2 1/2"
SHRUB	Quantity	Code	Botanical	Common	O.C.	Notes	Size	Cal.
	44	LORPI	Loropetalum ch. 'Pizzaz'	Pizzaz loropetalum	6'		1 gal 12-18"	
GROUND COVER	Quantity	Code	Botanical	Common	O.C.	Notes	Size	Cal.
	76 SF	N/A	ANNUALS				4" Pot	

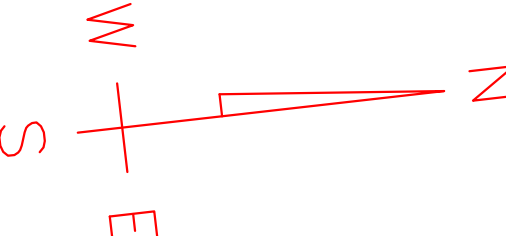
LA1.3: NORTH



KEY PLAN N.T.S.



BEFORE YOU DIG!
CALL 1-800-632-4949
N.C. ONE-CALL CENTER
IT'S THE LAW!



Cypress Cove Apartments
821 Emory St
Wilmington, NC 28405

200 UNITS

TightLines Designs
creating great places to live

115.5 E. Hargett St, Suite 300, Raleigh, NC 27601
919-834-3600 • www.tightlinesdesigns.com

Cypress Cove

LANDSCAPE PLAN,
NOTES, & DETAILS



H. BURKERT & CO.
PLANNING • CIVIL ENGINEERING • LANDSCAPE ARCHITECTURE

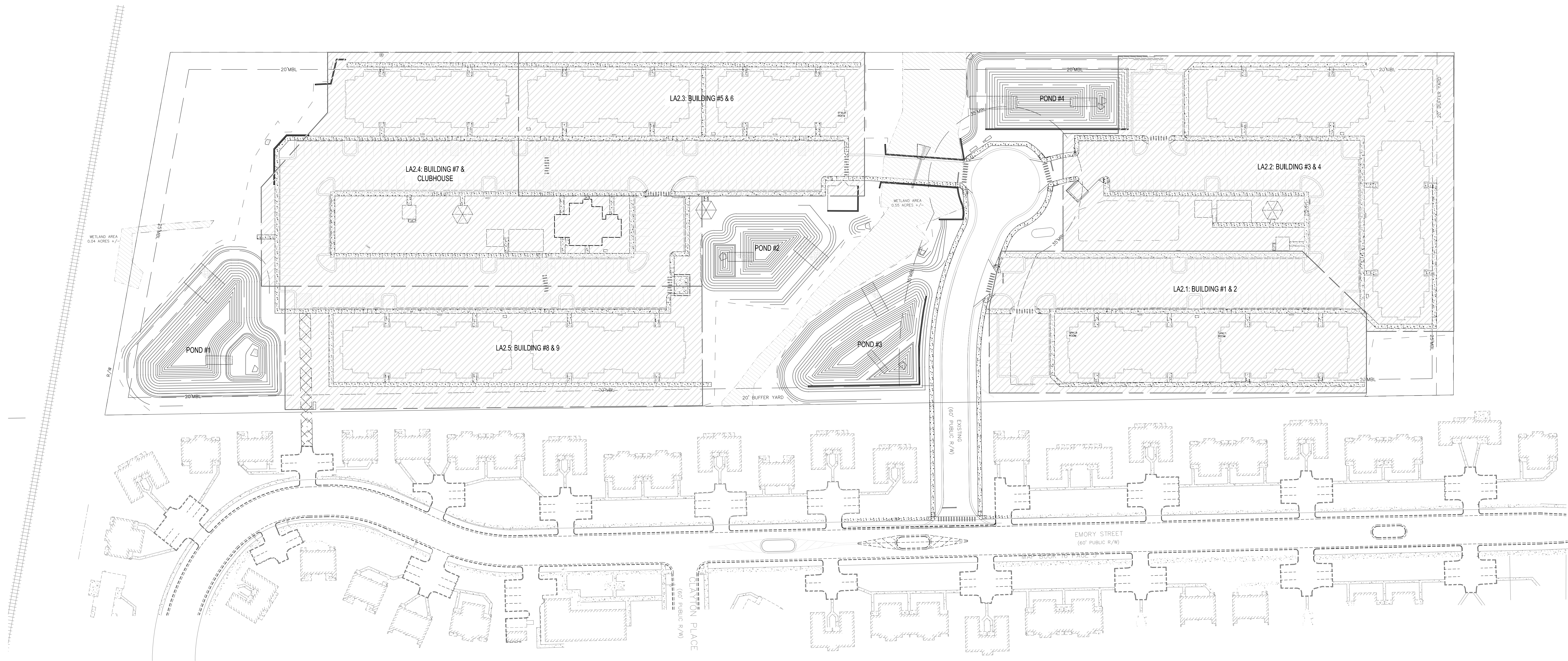
HBC - H. BURKERT & CO.
668 Midway Road SE, Bolivia, NC 28422
T: 910.253.95 F: 910.253.9386
Electronic Mail: hbc@hburkert.com
www.hburkert.com

Heather M. Burkert
Landscape Architect

date 04.14.17
drafter CMK
checked by HMB
proj. no. T-160014
revisions date
REV 09.20.17

STREET TREE & PARKING
NORTH

LA1.3



Cypress Cove Apartments
821 Emory St
Wilmington, NC 28405

200 UNITS

TightLines Designs
creating great places to live
115.5 E. Hargett St, Suite 300, Raleigh, NC 27601
919-834-3600 • www.tightlinesdesigns.com

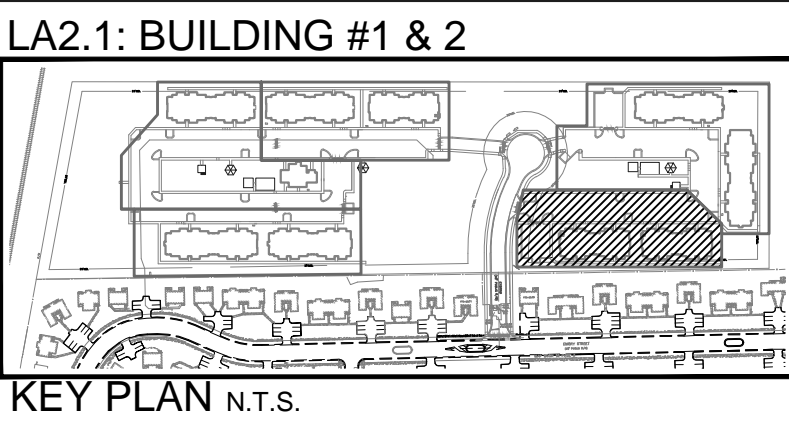
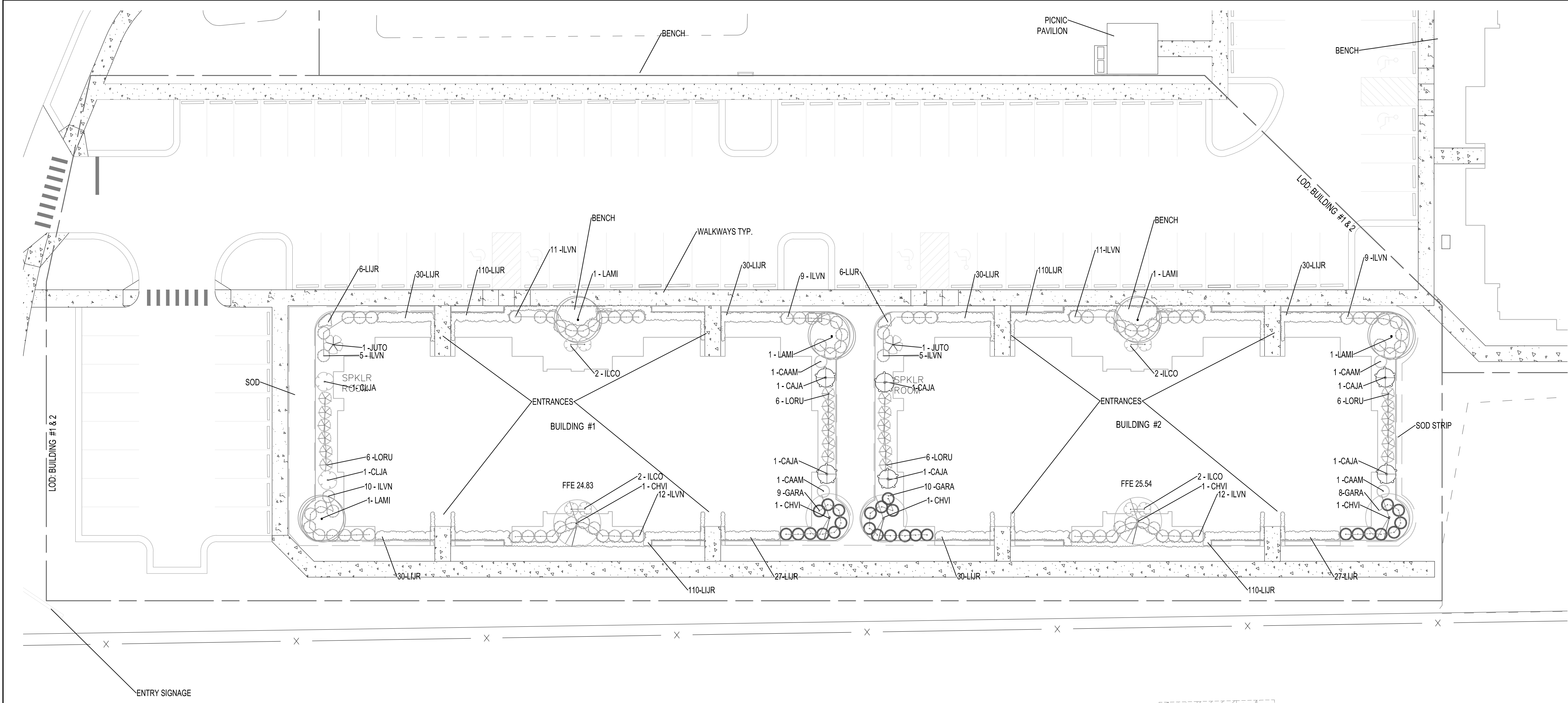
Cypress Cove
LANDSCAPE PLAN,
NOTES, & DETAILS

H B C
H. BURKERT & CO.
PLANNING • CIVIL ENGINEERING • LANDSCAPE ARCHITECTURE
HBC - H. BURKERT & CO.
668 Midway Road SE, Bolivia, NC 28422
T: 910.253.95 F: 910.253.9386
Electronic Mail: hbc@hburkert.com
www.hburkert.com

Heather M. Burkert
Landscape Architect

date	03.20.17
drafter	CMK
checked by	HMB
proj. no.	T-16001.4
revisions	date
REV	04.14.17
REV	09.20.17

OVERALL
(KEY PLAN)
LA2.0

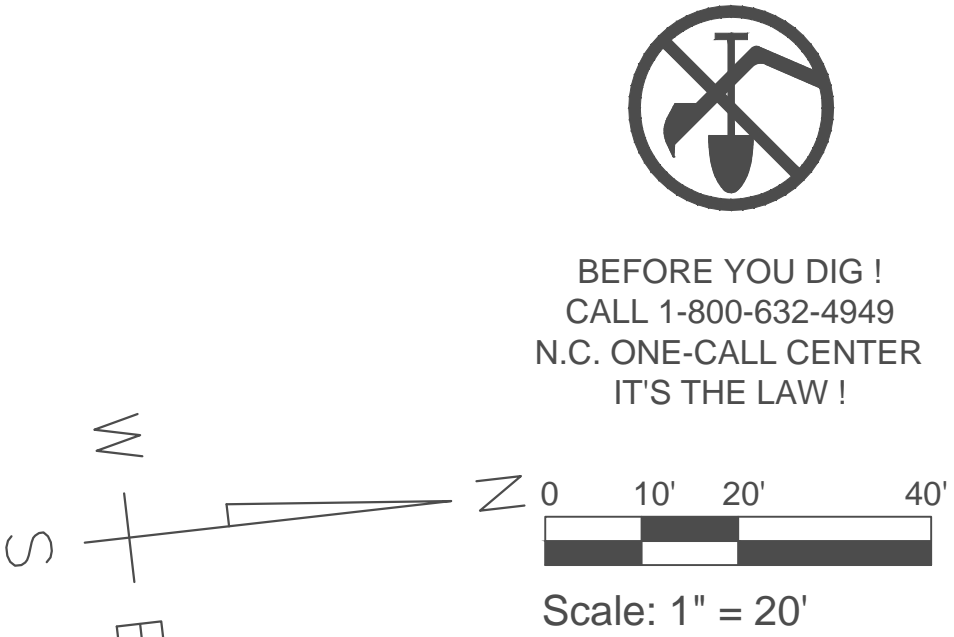


PLANT SCHEDULE: Building #1

SMALL TREE	Quantity	Code	Botanical	Common	O.C.	Notes	Size	Cal.
	2	CHVI	Chionanthus virginicus	White fringe tree	15'		15 Gal 6-8' full	1 1/2-2"
	3	LAMI	Lagerstroemia x 'Miami'	Pink Crapemyrtle	15'	multi-stem	15 Gal 6-8'	1 1/2-2"
SHRUB	Quantity	Code	Botanical	Common	O.C.	Notes	Size	Cal.
	2	CAAM	Callicarpa americana	Beauty berry	5'		1 gal 12-18"	
	2	CAJA	Camellia japonica 'Professor Sargent'	Red camellia	5'		3 Gal 18-24"	
	2	CLJA	Cleyera Japonica	Japanese cleyera	6'		1 gal 12-18"	
	9	GARA	Gardenia radicans	Dwf. Gardenia	3'		1 gal 12-18"	
	4	ILCO	Ilex cornuta 'Burfordi nana'	Dwf. Burford holly	4'		1 gal 12-18"	
	47	ILVN	Ilex vomitoria 'Nana'	Dwf. Yaupon holly	3'		1 gal 12-18"	
	1	JUTO	Juniperus communis 'Torulosa'	Torulosa juniper	6'		1 gal 12-18"	
	12	LORU	Loropetalum ch. 'Ruby'	Ruby loropetalum	4'		1 gal 12-18"	
GROUNDCOVER	Quantity	Code	Botanical	Common	O.C.	Notes	Size	Cal.
	343	LUR	Liriope spicata	Lily Turf	16" O.C.		4" pot full	

PLANT SCHEDULE: Building #2

SMALL TREE	Quantity	Code	Botanical	Common	O.C.	Notes	Size	Cal.
	3	CHVI	Chionanthus virginicus	White fringe tree	15'		15 Gal 6-8' full	1 1/2-2"
	2	LAMI	Lagerstroemia x 'Miami'	Pink Crapemyrtle	15'	multi-stem	15 Gal 6-8'	1 1/2-2"
SHRUB	Quantity	Code	Botanical	Common	O.C.	Notes	Size	Cal.
	2	CAAM	Callicarpa americana	Beauty berry	5'		1 gal 12-18"	
	4	CAJA	Camellia japonica 'Professor Sargent'	Red camellia	5'		1 gal 12-18"	
	18	GARA	Gardenia radicans	Dwf. Gardenia	3'		1 gal 12-18"	
	4	ILCO	Ilex cornuta 'Burfordi nana'	Dwf. Burford holly	4'		1 gal 12-18"	
	37	ILVN	Ilex vomitoria 'Nana'	Dwf. Yaupon holly	3'		1 gal 12-18"	
	1	JUTO	Juniperus communis 'Torulosa'	Torulosa juniper	6'		1 gal 12-18"	
	12	LORU	Loropetalum ch. 'Ruby'	Ruby loropetalum	4'		1 gal 12-18"	
GROUNDCOVER	Quantity	Code	Botanical	Common	O.C.	Notes	Size	Cal.
	343	LUR	Liriope spicata	Lily Turf	16" O.C.		4" pot full	



BEFORE YOU DIG !
CALL 1-800-632-4949
N.C. ONE-CALL CENTER
IT'S THE LAW !

Cypress Cove Apartments
821 Emory St
Wilmington, NC 28405

200 UNITS



115.5 E. Hargett St, Suite 300, Raleigh, NC 27601
919-834-3600 • www.tightlinesdesigns.com

Cypress Cove
LANDSCAPE PLAN,
NOTES, & DETAILS



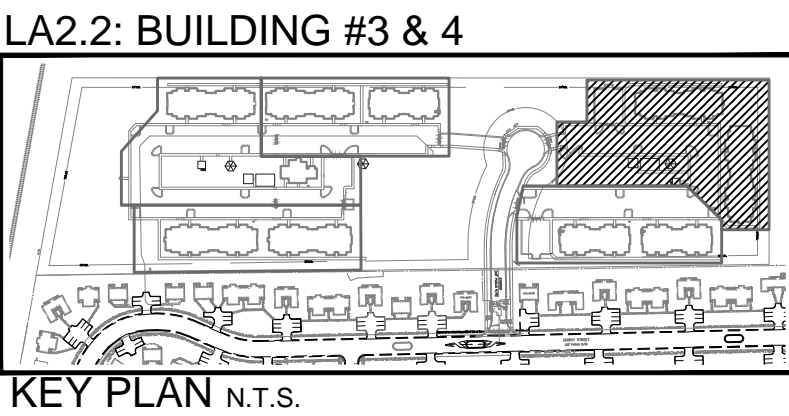
HBC - H. BURKERT & CO.
668 Midway Road SE, Bolivia, NC 28422
T: 910.253.95 F: 910.253.9386
Electronic Mail: hbc@hburkert.com
www.hburkert.com

Heather M. Burkert
Landscape Architect

date	03.20.17
drafter	CMK
checked by	HMB
proj. no.	T-16001.4
revisions	date
REV	04.14.17
REV	09.20.17

Building #1 & 2

LA2.1

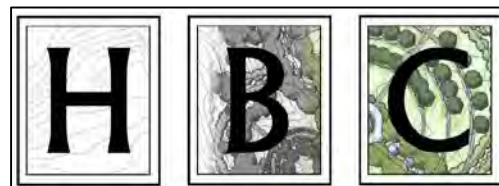


200 UNITS

TightLines Designs
creating great places to live

115.5 E. Hargett St, Suite 300, Raleigh, NC 27601
919-834-3600 • www.tightlinesdesigns.com

Cypress
Cove

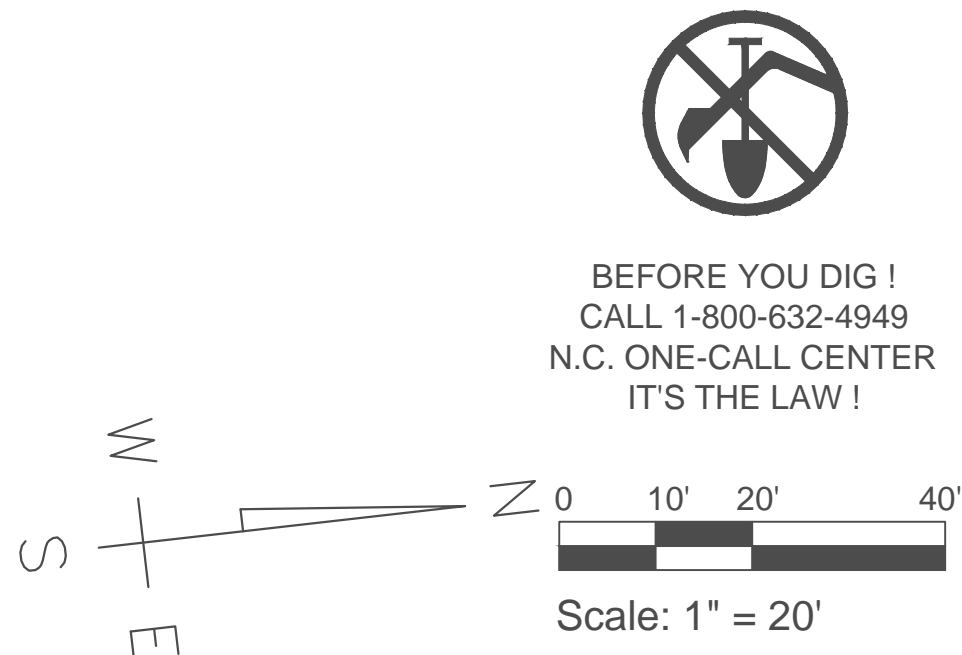


HBC - H. BURKERT & CO.
668 Midway Road SE, Bolivia, NC 28422
T: 910.253.95 F: 910.253.9386
Electronic Mail: hbc@hburkert.com
www.hburkert.com

date	03.20.17
drafter	CMK
checked by	HMB
proj. no.	T-160014
revisions	date
REV	04.14.17
REV	09.20.17

LA2.2

	Quantity	Code	Botanical	Common	O.C.	Notes	Size	Cal.	
SMALL TREE	2	AERU	Acer rubrum	Red Maple	40'		25 Gal 8-10'	2-2 1/2"	
			Botanical	Common	O.C.	Notes	Size	Cal.	
	2	CHVI	Chionanthus virginicus	White fringe tree	15'		15 Gal 6-8' full	1 1/2-2"	
	3	LAMI	Lagerstroemia x 'Miami'	Pink Crapemyrtle	15'	multi=ste,	15 Gal 6-8'	1 1/2-2"	
SHRUB		Quantity	Code	Botanical	Common	O.C.	Notes	Size	Cal.
	2	CASA	Camellia sasanqua 'Sparkling Burgandy'	Dk. Pink camellia	5'		1 gal 12-18"		
	12	IGSH	Ilex glabra 'Shamrock'	Shamrock Holly	5'		5 gal 3' min		
	10	ILCO	Ilex cornuta 'Burfordi nana'	Dwf. Burford holly	4'		1 gal 12-18"		
	6	ILTR	Ilex vomitoria 'Taylors Rudolf'	Yaupon holly	4'		1 gal 12-18"	2-2 1/2"	
	12	LORPI	Loropetalum ch. 'Pizzaz'	Pizzaz loropetalum	6'		5 gal 3' min.		
	6	LORU	Loropetalum ch. 'Ruby'	Ruby loropetalum	4'		1 gal 12-18"		
	24	MYCE	Myrica cerifera	Wax myrtle	5'		5 gal 3' min.		
	20	NADO	Nandina domestica 'Compacta'	Compact Nandina	3' O.C.		1 gal 12-18"		
	5	OSFR	Osmanthus fragrans	Fragrant Osmanthus	6'		1 gal 12-18"		
	32	PITO	Pittosporum tobira 'Compacta'	Compact pittosporum	4'		1 gal 12-18"		
GROUND COVER	6	PSGU	Feijoa sellowiana	Pineapple guava	5'		5 Gal 3' min		
	3	VIMA	Viburnum macrophyllum	Viburnum	6'		1 gal 12-18"		
		Quantity	Code	Botanical	Common	O.C.	Notes	Size	Cal.
	735	LJUR	Liriope spicata	Lily Turf	16" O.C.		4" pot full		



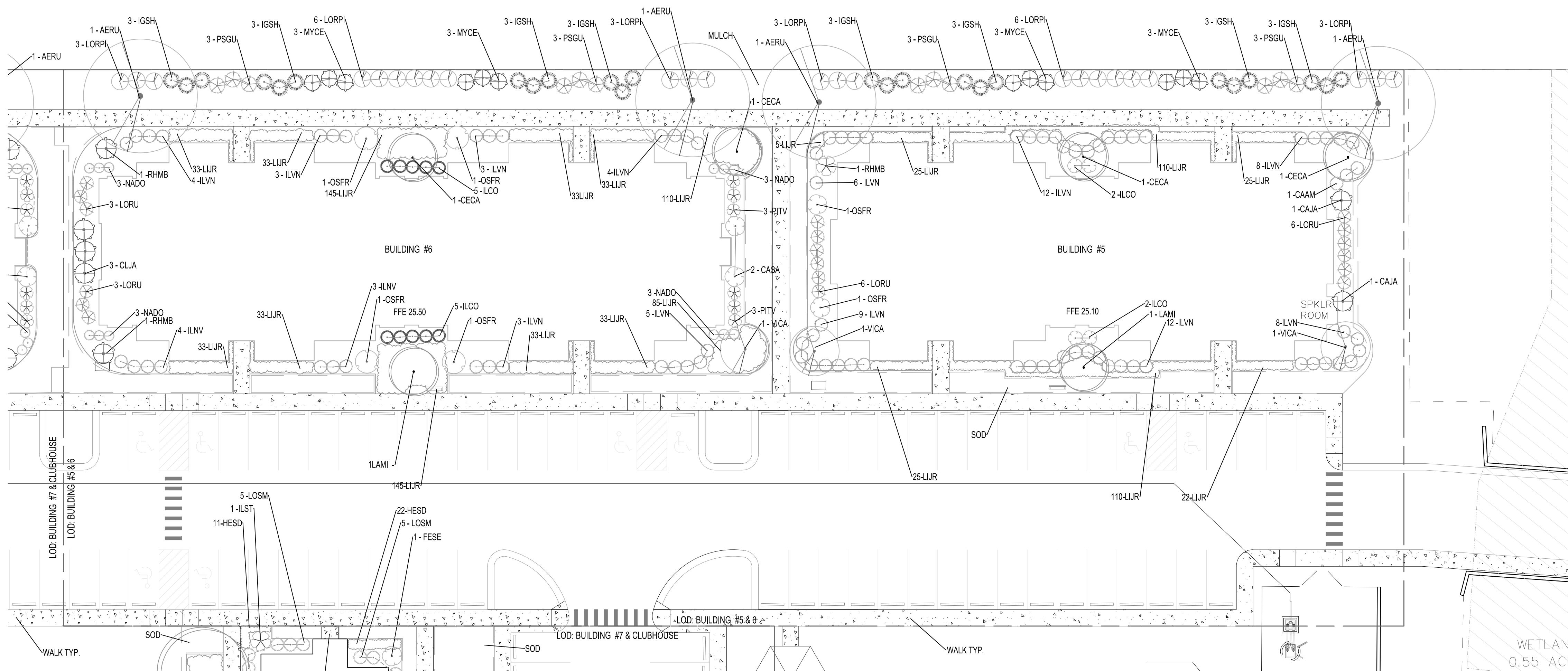
200 UNITS

Cypress Cove



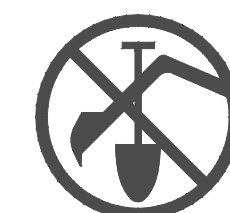
Heather M. Burkert
Landscape Architect

LA2.3



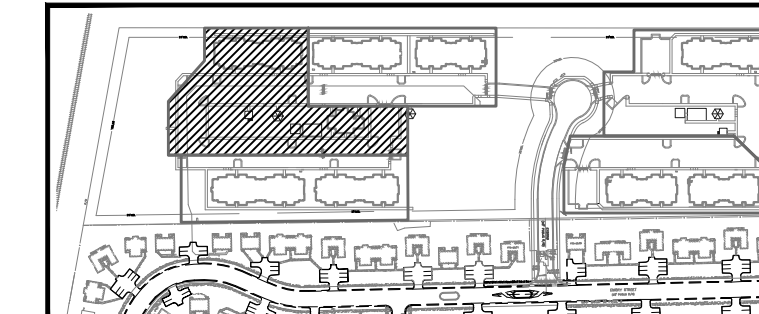
SHADE TREE	Quantity	Code	Botanical	Common	O.C.	Notes	Size	Cal.
	2	AERU	Acer rubrum	Red Maple	40'			25 Gal 8-10'
SMALL TREE	Quantity	Code	Botanical	Common	O.C.	Notes	Size	Cal.
	2	CECA	Cercis canadensis	Redbud tree	15'		15 Gal 6-8' full	1 1/2-2"
	2	VICA	Vitex agnus-castus	Chaste tree	15'		15 Gal 6-8' full	1-1 1/2"
	1	LAMI	Lagerstroemia x 'Miami'	Pink Crapemyrtle	15'	multi-stem	15 Gal 6-8'	1 1/2-2"
SHRUB	Quantity	Code	Botanical	Common	O.C.	Notes	Size	Cal.
	2	CAJA	Camellia japonica 'Professor Sargent'	Dk. Pink camellia	5'		1 gal 12-18"	
	1	CAAM	Callicarpa americana	Beautyberry	5'		1 gal 12-18"	
	12	IGSH	Ilex glabra 'Shamrock'	Shamrock Holly	5'		5 gal 3' min	
	4	ILCO	Ilex cornuta 'Burford holly	Dwf. Burford holly	4'		5 gal 12-18"	
	55	ILVN	Ilex vomitoria 'Nana'	Dwf. Yaupon holly	3'		1 gal 12-18"	
	12	LORPI	Loropetalum ch. 'Pizzaz'	Pizzaz loropetalum	6'		5 gal 3' min.	
	12	LORU	Loropetalum ch. 'Ruby'	Ruby loropetalum	4'		1 gal 12-18"	
	6	MYCE	Myrica cerifera	Wax myrtle	5'		5 gal 3' min.	
	2	OSFR	Osmanthus fragrans	Fragrant Osmanthus	6'		1 gal 12-18"	
	6	PSGU	Feijoa sellowiana	Pineapple guava	5'		5 Gal 3' min	
	1	RHMB	Rapheiolepis x. 'Majestic Beauty'	Majestic Beauty hawthorn	6'		1 gal 12-18"	
GROUNDCOVER	Quantity	Code	Botanical	Common	O.C.	Notes	Size	Cal.
	322	LJLR	Liriope spicata	Lily Turf	16" O.C.		4" pot full	

SHADE TREE	Quantity	Code	Botanical	Common	O.C.	Notes	Size	Cal.
	2	AERU	Acer rubrum	Red Maple	40'			25 Gal 8-10'
SMALL TREE	Quantity	Code	Botanical	Common	O.C.	Notes	Size	Cal.
	2	CECA	Cercis canadensis	Redbud tree	15'		15 Gal 6-8' full	1 1/2-2"
	1	VICA	Vitex agnus-castus	Chaste tree	15'		15 Gal 6-8' full	1-1 1/2"
	1	LAMI	Lagerstroemia x 'Miami'	Pink Crapemyrtle	15'	multi-stem	15 Gal 6-8'	1 1/2-2"
SHRUB	Quantity	Code	Botanical	Common	O.C.	Notes	Size	Cal.
	2	CASA	Camellia sasanqua 'Sparkling Burgandy'	Dk. Pink camellia	5'		1 gal 12-18"	
	3	CLJA	Cleyera japonica	Cleyera	5'		1 gal 12-18"	
	12	IGSH	Ilex glabra 'Shamrock'	Shamrock Holly	5'		5 gal 3' min	
	10	ILCO	Ilex cornuta 'Burfordi nana'	Dwf. Burfordi holly	4'		1 gal 12-18"	
	29	ILVN	Ilex vomitoria 'Nana'	Dwf. Yaupon holly	3'		1 gal 12-18"	
	12	LORPI	Loropetalum ch. 'Pizzaz'	Pizzaz loropetalum	6'		5 gal 3' min.	
	6	LORU	Loropetalum ch. 'Ruby'	Ruby loropetalum	4'		1 gal 12-18"	
	6	MYCE	Myrica cerifera	Wax myrtle	5'		5 gal 3' min.	
	12	NADO	Nandina domestica 'Compacta	Compact Nandina	3' O.C.		1 gal 12-18"	
	4	OSFR	Osmanthus fragrans	Fragrant Osmanthus	6'		1 gal 12-18"	
	6	PSGU	Feijoa sellowiana	Pineapple guava	5'		5 Gal 3' min	
	6	PITV	Pittosporum tobira 'Variegata'	Variegated Pittosporum	4'		1 gal 12-18"	
	2	RHMB	Rapheiolepis u. 'Majestic Beauty'	Majestic Beauty hawthorn	6'		1 gal 12-18"	
GROUNDCOVER	Quantity	Code	Botanical	Common	O.C.	Notes	Size	Cal.
	749	LJUR	Liriope spicata	Lily Turf	16" O.C.		4" pot full	



IT'S THE LAW!

Scale: 1" = 20'



200 UNITS

 TightLines Designs
creating great places to live

115.5 E. Hargett St, Suite 300, Raleigh, NC 27601

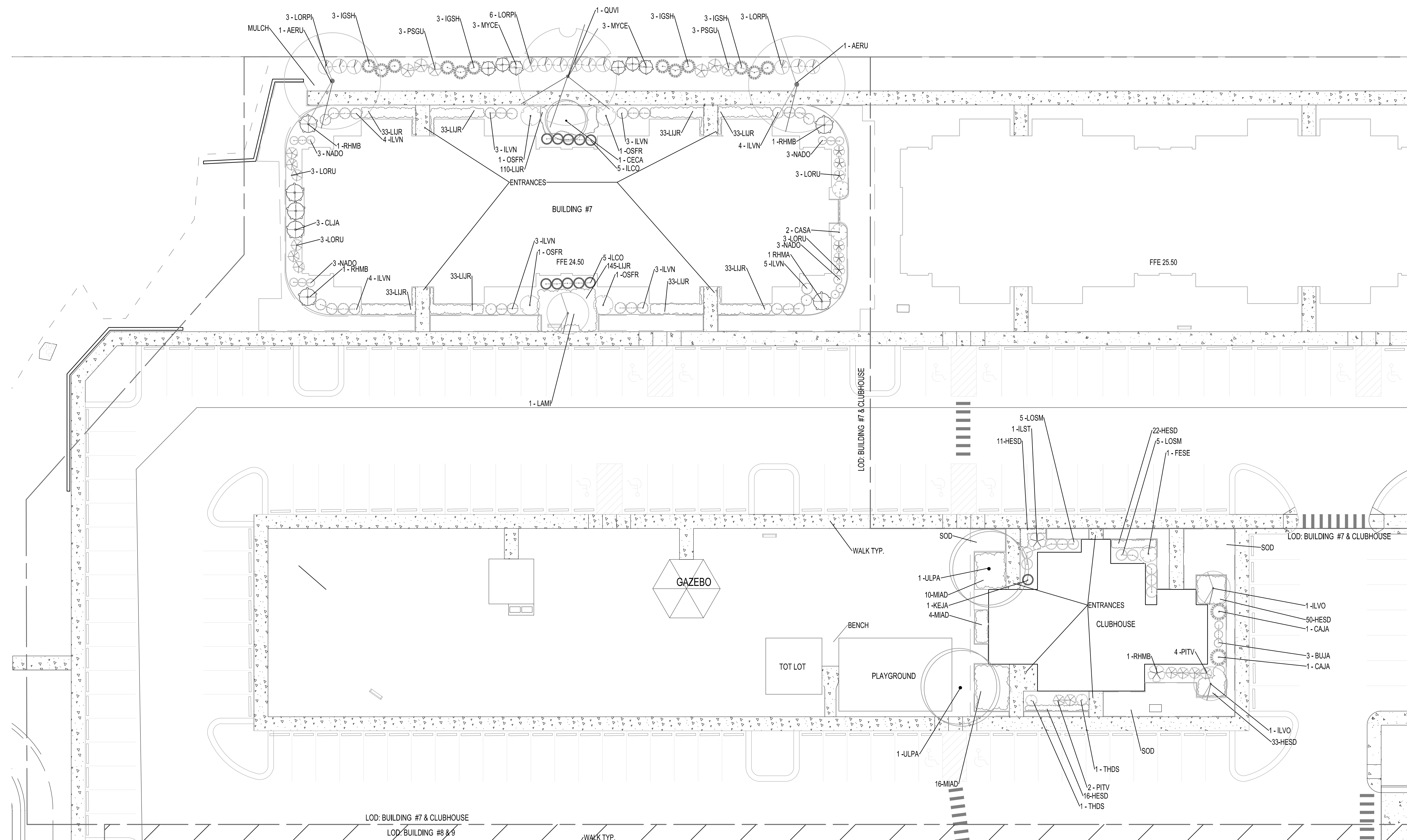
Cypress Cove



HBC - H. BURKERT & CO
668 Midway Road SE, Bolivia, NC 28414
T: 910.253.95 F: 910.253.95
Electronic Mail: hbc@hburkert.com
www.hburkert.com

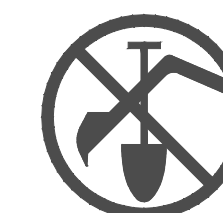
date	03.20.17
drafter	CMK
checked by	HMB
proj. no.	T-160014
revisions	date
REV	04.14.17
REV	09.20.17

LA2.4

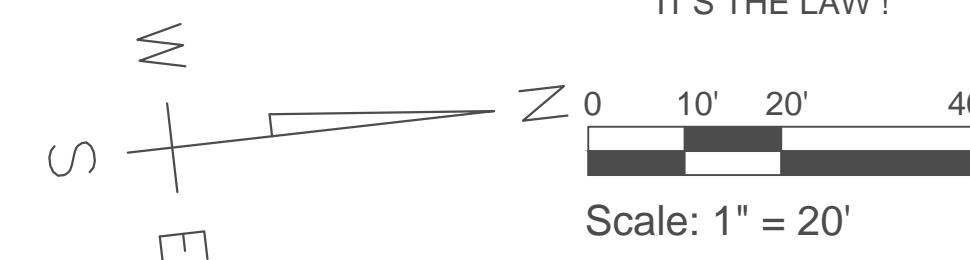


	Quantity	Code	Botanical	Common	O.C.	Notes	Size	Cal.
SMALL TREE	1	CECA	Cercis canadensis	Redbud tree	15'		15 Gal 6-8' full	1 1/2-2"
	1	LAMI	Lagerstroemia x 'Miami'	Pink Crapemyrtle	15'	multi-stem	15 Gal 6-8'	1 1/2-2"
	Quantity	Code	Botanical	Common	O.C.	Notes	Size	Cal.
SHRUB	2	CASA	Camellia sasanka 'Sparkling Burgandy'	Dk. Pink camellia	5'		1 gal 12-18"	
	3	CLJA	Cleyera japonica	Cleyera	5'		1 gal 12-18"	
	10	ILCO	Ilex cornuta 'Burfordi nana'	Dwf. Burford holly	4'		1 gal 12-18"	
	29	ILVN	Ilex vomitoria 'Nana'	Dwf. Yaupon holly	3'		1 gal 12-18"	
	12	LORU	Loropetalum ch. 'Ruby'	Ruby loropetalum	4'		1 gal 12-18"	
	12	NADO	Nandina domestica 'Compacta	Compact Nandina	3' O.C.		1 gal 12-18"	
	4	OSFR	Osmanthus fragrans	Fragrant Osmanthus	6'		1 gal 12-18"	
	0	PITV	Pittosporum tobira 'Variegata'	Variegated Pittosporum	4'		1 gal 12-18"	
	4	RHMA	Rapheiolepis u. 'Majestic Beauty'	Majestic Beauty hawthorn	6'		1 gal 12-18"	
	Quantity	Code	Botanical	Common	O.C.	Notes	Size	Cal.
GROUND COVER	317	LJLR	Liriope spicata	Lily Turf	16"	O.C.	4" pot full	

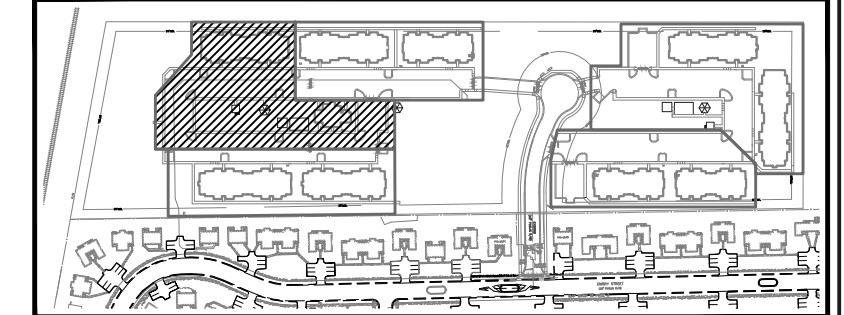
SHADE TREE	Quantity	Code	Botanical	Common	O.C.	Notes	Size	Cal.
	2	ULPA	Ulmus parvifolia	Lacebark Elm	40'		25 Gal 8-10'	2-2 1/2"
SMALL TREE	Quantity	Code	Botanical	Common	O.C.	Notes	Size	Cal.
	2	ILVO	Ilex vomitoria female	Yaupon holly female	15'		15 Gal 6-8' full	
	Quantity	Code	Botanical	Common	O.C.	Notes	Size	Cal.
SHRUB	3	BUJA	Buxus japonica 'Wintergreen'	Wintergreen boxwood	3'		1 gal 12-18"	
	2	CAJA	Camellia japonica 'Debutante'	Dk. Pink camellia	5'		1 gal	
	1	FESE	Feijoa sellowana	Pineapple guava	5'		1 gal	
	1	KEJA	Kerria japonica 'Golden Guinea'	Japanese kerria	3'		1gal 12-18"	
	1	ILST	Ilex x 'Steeds Holly'	Steeds holly	5'		1 gal	
	10	LOSM	Loropetalum ch. 'Snow Muffin'	Dwf. Snow Muffin loropetalum	4'		1 gal	
	6	PITV	Pittosporum tobira 'Variegata'	Variegated Pittosporum	4'		1 gal	
	1	RHMB	Rapheiolepis u. 'Majestic Beauty'	Majestic Beauty hawthorn	6'		1 gal	
	2	THDS	Thuja c. 'DeGroote's Spire'	Arboretum spire	3'		3 Gal 18-24"	
GROUND COVER	Quantity	Code	Botanical	Common	O.C.	Notes	Size	Cal.
	132	HESD	Hemerocallis x 'Stella D' Oro'	Daylily	16"		1 gal full	
	30	MIAD	Miscanthus s. 'Adagio'	Adagio grass	36"		1 gal 12-18"	



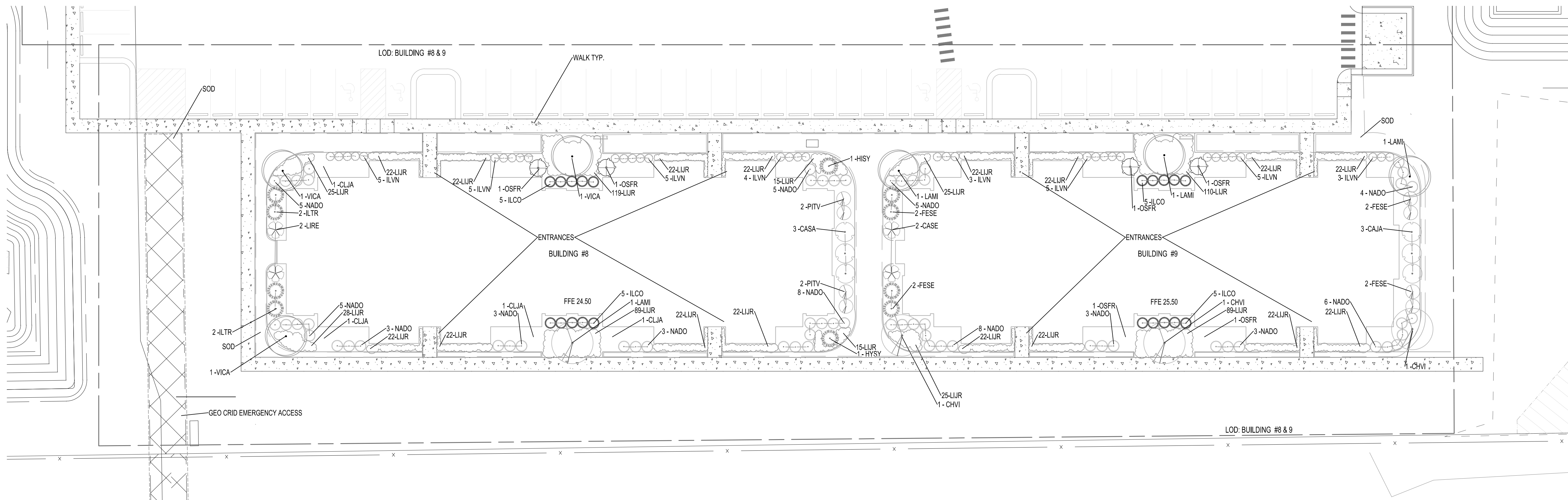
Scale: 1" = 20'



LA2.5: BUILDING #8 & 9



KEY PLAN N.T.S.



PLANT SCHEDULE: Building #8

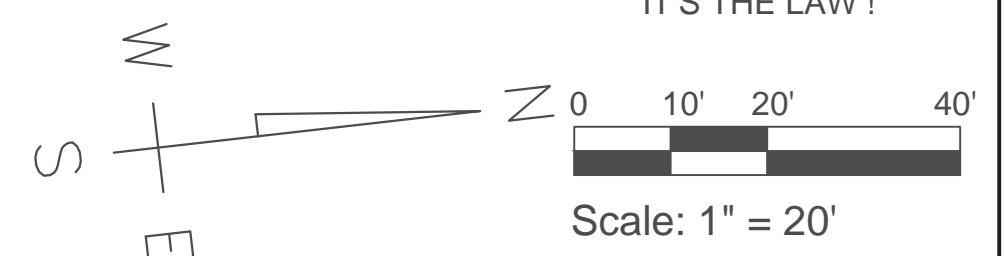
	Quantity	Code	Botanical	Common	O.C.	Notes	Size	Cal.
SMALL TREE	3	LAMI	Lagerstroemia x 'Miami'	Pink Crapemyrtle	15'	multistyle,	15 Gal 6-8"	1 1/2-2"
	3	VICA	Vitex agnus-castus	Chaste tree	15'		15 Gal 6-8" full	1 1/2-2"
	Quantity	Code	Botanical	Common	O.C.	Notes	Size	Cal.
SHRUB	3	CASA	Camellia sasanqua 'Sparkling Burgandy'	Dk. Pink camellia	5'		1 gal 12-18"	
	4	CLJA	Cleyera japonica	Cleyera	5'		1 gal 12-18"	
	10	ILCO	Ilex cornuta 'Burfordii nana'	Dwf. Burford holly	4'		1 gal 12-18"	
	4	ILTR	Ilex vomitoria 'Taylor's Rudolph'	T.R. Yaupon holly	4'		1 gal 12-18"	
	19	ILVN	Ilex vomitoria 'Nana'	Dwf. Yaupon holly	3'		1 gal 12-18"	
	2	LIRE	Ligustrum recurvifolium	Ligustrum	5'		1 gal 12-18"	
	2	HISY	Hibiscus syriacus 'Bluebird'	Bluebird Hardy Hibiscus	5' O.C.		1 gal 12-18"	
	32	NADO	Nandina domestica 'Compacta	Compact Nandina	2' O.C.		1 gal 12-18"	
	2	OSFR	Osmanthus fragrans	Fragrant Osmanthus	6'		1 gal 12-18"	
	4	PITV	Pittosporum tobira 'Compacta'	Compact pittosporum	4'		1 gal 12-18"	
	3	VIMA	Viburnum macrophyllum	Viburnum	6'		3 Gal 18-24" 1 gal	
	Quantity	Code	Botanical	Common	O.C.	Notes	Size	Cal.
GROUNDCOVER	467	LJUR	Liriope spicata	Lily Turf	16" O.C.		4" pot full	

PLANT SCHEDULE: Building #9

	Quantity	Code	Botanical	Common	O.C.	Notes	Size	Cal.
SMALL TREE	3	CHVI	Chionanthus virginicus	White fringe tree	15'		15 Gal 6-8' full	1 1/2-2"
	3	LAMI	Lagerstroemia x 'Miami'	Pink Crapemyrtle	15'	multi-stem	15 Gal 6-8'	1 1/2-2"
	Quantity	Code	Botanical	Common	O.C.	Notes	Size	Cal.
SHRUB	3	CAJA	Camellia japonica 'Professor Sargent'	P. S. Camellia	5'		1 gal 12-18"	
	2	CASE	Camellia sasangua 'Sparkling Burgandy'	S. B Camellia	5'		1 gal 12-18"	
	8	FESE	Feijoa sellowiana	Pineapple guava	5'		1 gal 12-18"	
	10	ILCO	Ilex cornuta 'Burfordi nani'	Dwf. Burford holly	4'		1 gal 12-18"	
	16	ILVN	Ilex vomitoria 'Nana'	Dwf. Yaupon holly	3'		1 gal 12-18"	
	29	NADO	Nandina domestica 'Compacta	Compact Nandina	4 O.C.		1 gal 12-18"	
	4	OSFR	Osmanthus fragrans	Fragrant Osmanthus	6'		1 gal 12-18"	
	Quantity	Code	Botanical	Common	O.C.	Notes	Size	Cal.
GROUNDCOVER	425	LUR	Liriope spicata	Lily Turf	16"	O.C.	4" pot full	



BEFORE YOU DIG !
CALL 1-800-632-4949
N.C. ONE-CALL CENTER
IT'S THE LAW !



Building #8 & 9